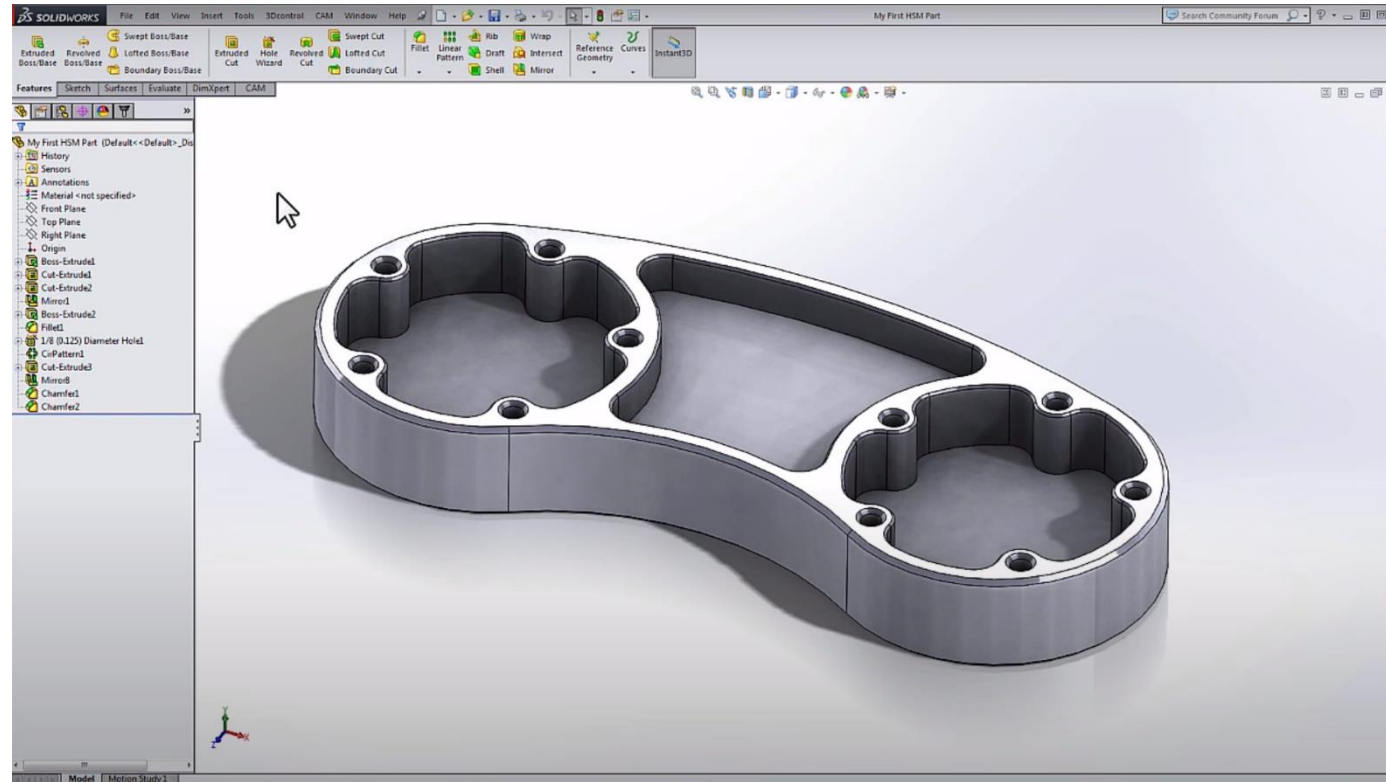


BMEN 2151 Introduction to Medical Device Prototyping

# CAM with HSMXpress & SolidWorks

Prof. Steven S. Saliterman, [www.saliterman.umn.edu](http://www.saliterman.umn.edu)



# Introduction to HSMXpress Part 1



# HSMXpress Part 2



# HSMXpress Part 3



# Complete Simulation of Another Tutorial

The image shows a screenshot of the SolidWorks HSMXpress 2019 Help window. The main window displays a 3D simulation of a part with toolpaths. The toolpaths are shown in blue and green, indicating the path of the cutting tool. The part is a complex, multi-faceted object with a central hole and a smaller hole on the right side. The toolpaths are shown in a 3D perspective view, with a green checkmark indicating that the simulation is complete.

The HSMXpress 2019 Help window is open on the right side of the screen. It has a dark header with the HSMXpress logo and the text "Tutorial 1 - 2D Machining" and "Tutorial 2 - High-Speed 3D Machining". The main content area is titled "Post Processing" and contains the following text:

It is good practice before you start the post processing to regenerate all toolpaths and then simulate the toolpaths. This way you can spot any errors in the toolpaths and rectify them.

We are ready to post process all toolpaths in order to make the NC-code which can be used by the machine tool.

- Right-click on **Job** in the operation manager.
- Select **Post Process (All)**.
- From the pull down **Post processor configuration** select **heidenhain.cps - Generic Heidenhain**
- Select an output folder of your choice.
- Start the post processor by clicking **Post**. By default the post processed file will be loaded into HSMXpress Edit.

You can also post process individual operations by invoking the post processor through a right-click on the operation, and selecting **Post Process** from the context menu.

**Congratulations!** You have completed this tutorial.

• Tapping Tutorial 2 - High-Speed 3D Machining

Generated on April 02, 2019 at 03:13 for HSMXpress 2019 R1.43575.  
Copyright © 2012-2018 Autodesk, Inc. All Rights Reserved.  
Copyright © 2008-2012 by HSMWorks ApS. | Email: [gam.support@autodesk.com](mailto:gam.support@autodesk.com)

The bottom of the screenshot shows the Windows taskbar with the time 8:44 AM and date 4/6/2020.

# Medical Device CNC Machining

